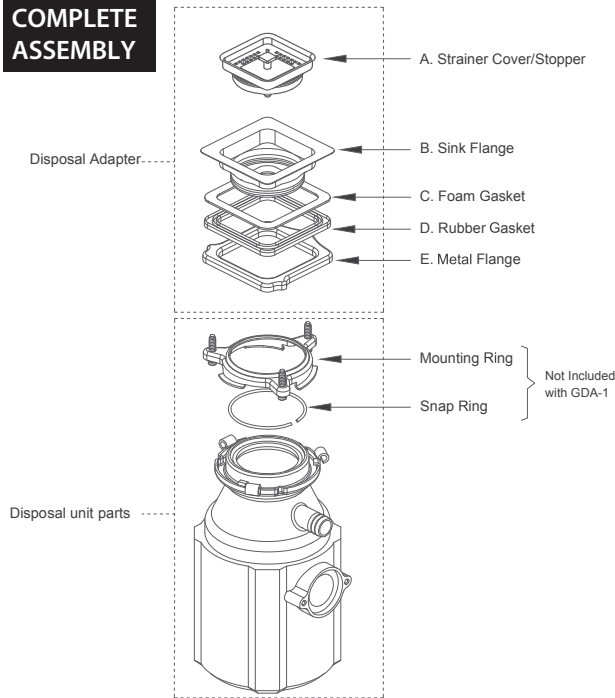


# INSTALLATION GUIDE

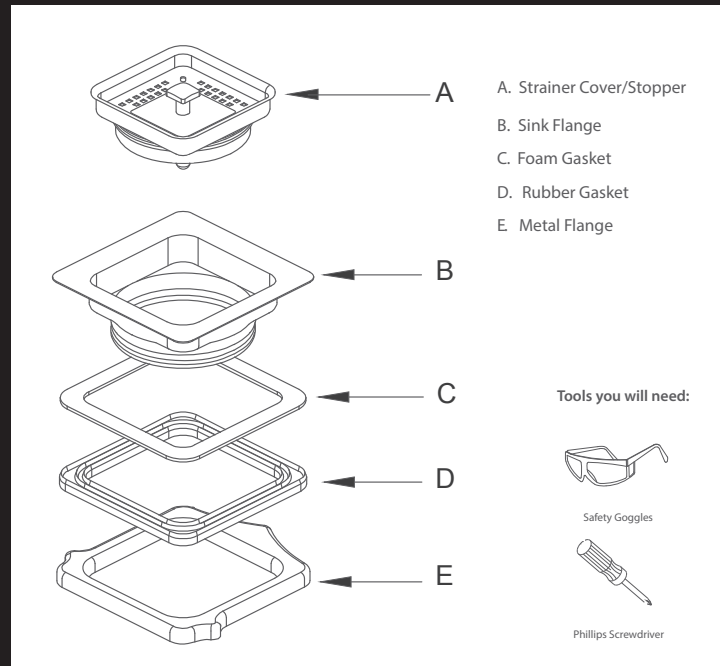
strictlysinks.store

 **STRICTLY** KITCHEN + BATH

## COMPLETE ASSEMBLY



## DISPOSAL ADAPTER - 1 Diagram and Parts List:

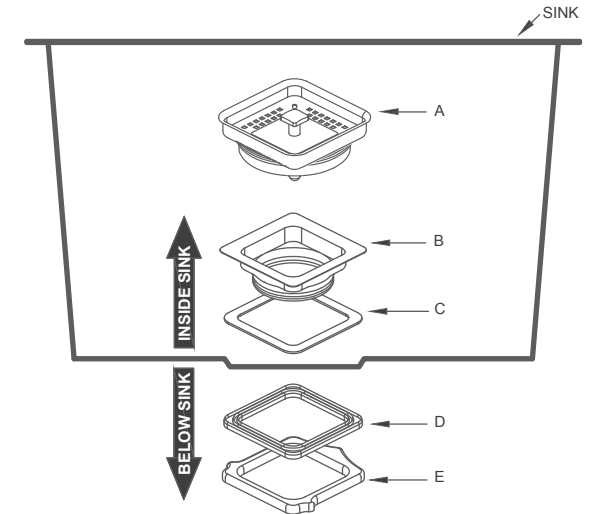


## 1. Disassemble Garbage Disposal Adapter

Remove strainer stopper (A), rubber gasket (D), and metal flange (E)

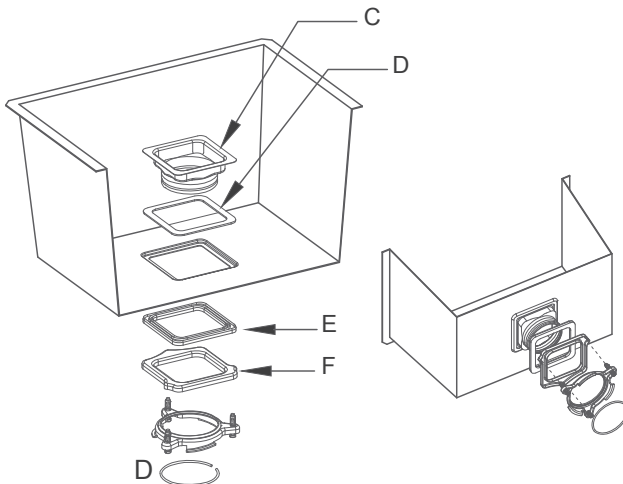
### NOTE

A - C fit "inside of sink drain"  
D - F fit "underneath" sink



## 2. Install Flange

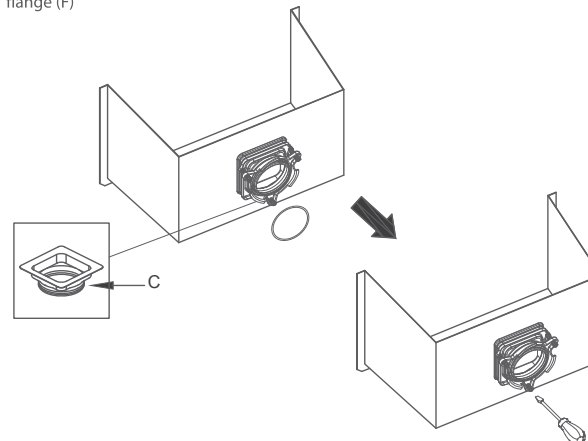
Insert sink flange (C) in drain hole of sink with foam gasket (D) attached. Attach rubber gasket (E) and metal flange (F) from underneath the sink. Attach snap ring (not included) onto base of metal flange.



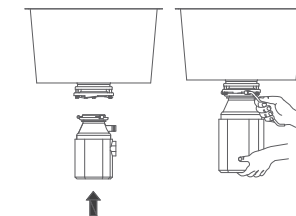
## 3. Secure Flange

Install mounting ring of garbage disposal unit (not included) over base of sink flange (C). Secure mounting ring by attaching snap ring onto base of sink flange (C). Tighten screws on mounting ring with Phillips head screwdriver to secure sink flange (C) to sink.

**Installer Tip:** Make sure screws are tightened in the designated areas of the metal flange (F)

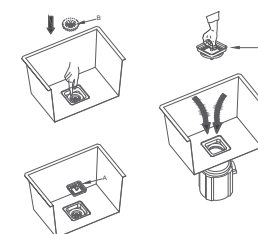


## 4. Install Garbage Disposal Unit



Install garbage disposal unit per manufacturer's instructions

## 5. Install Cover and Stopper



Insert stopper strainer cover (A) to seal water. Remove strainer cover stopper (A) to utilize garbage disposal