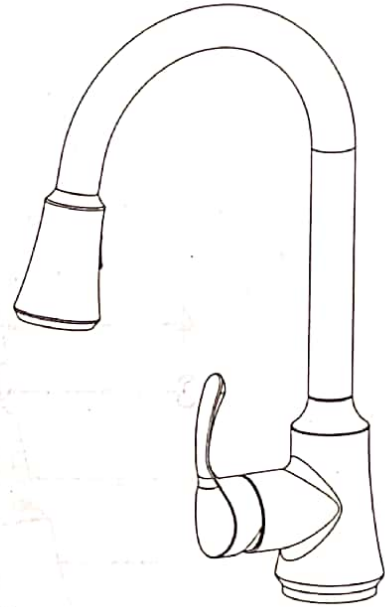
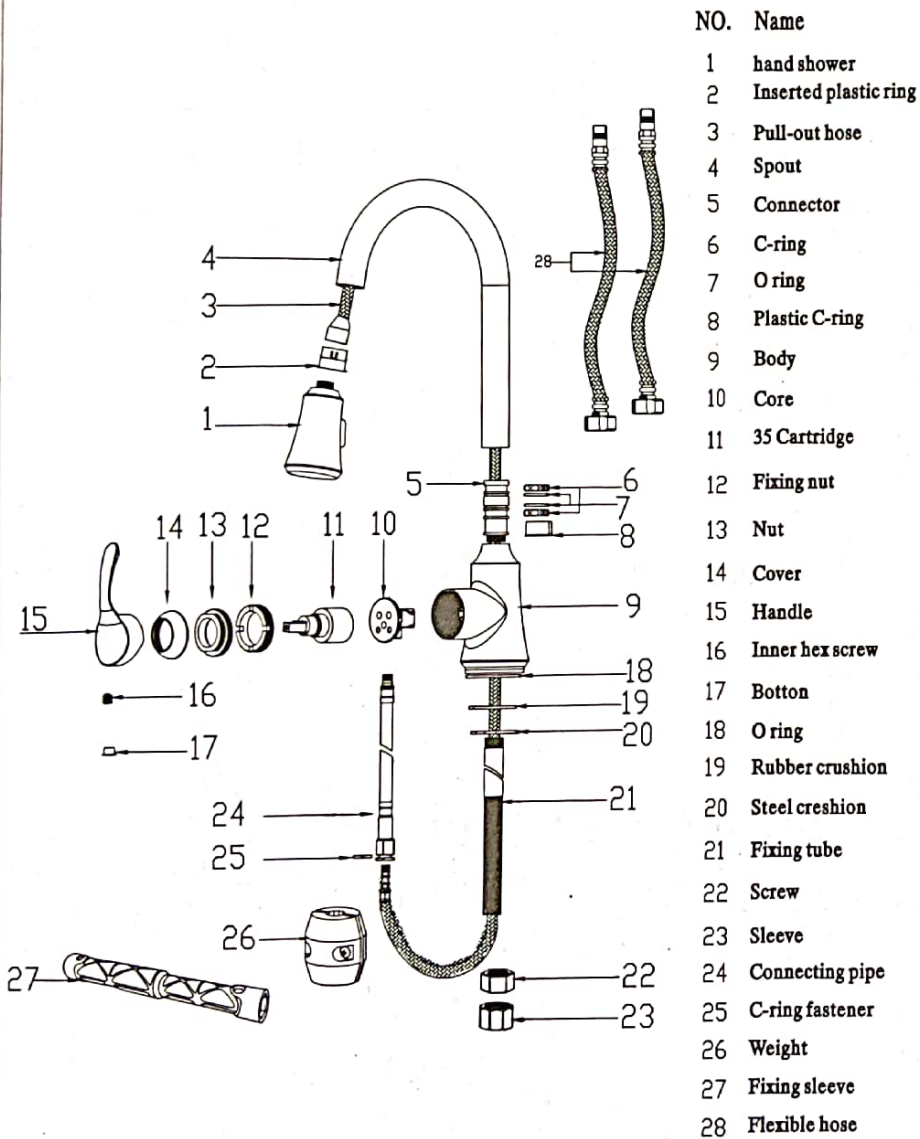


Installation Manual



Stainless steel Kitchen Pull-out Faucet

Exploded drawing

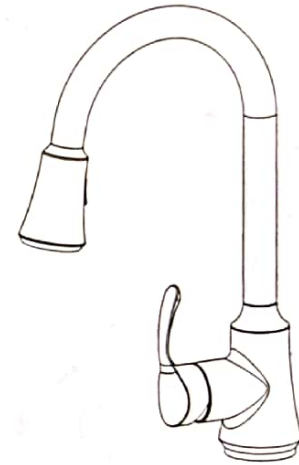


Installation Manual

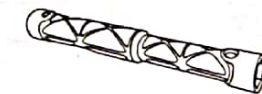
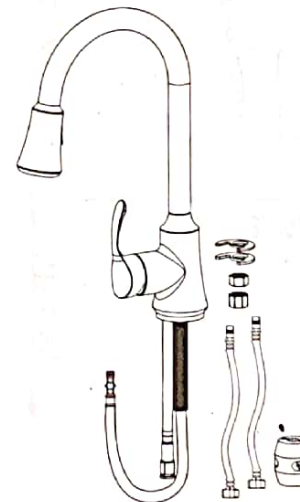
Stainless steel kitchen pull-out faucet

Before the installation

Check if all the parts are in the box



Tools you need



Fixing sleeve

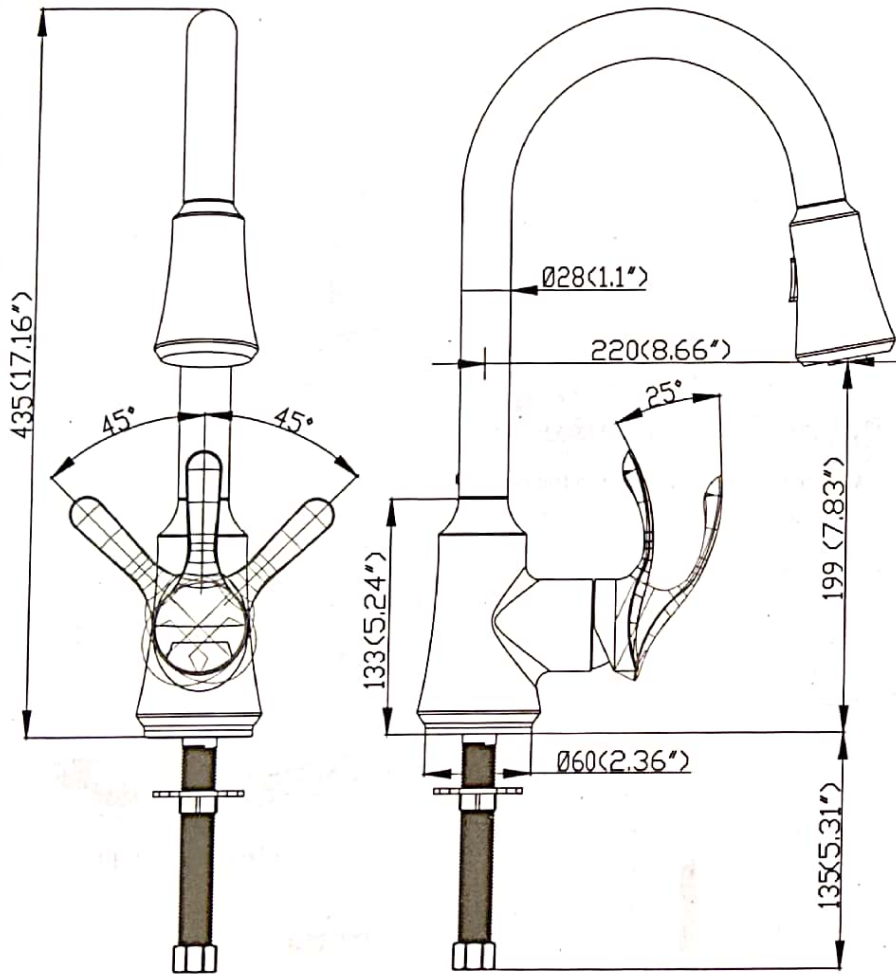


Tape

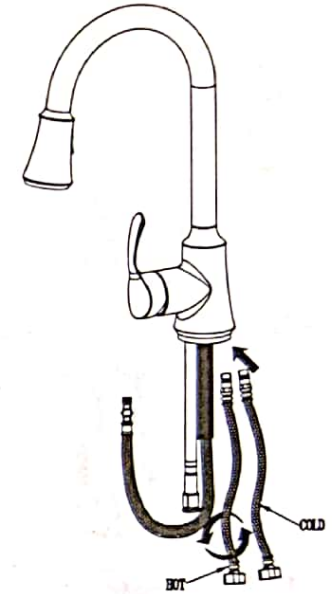
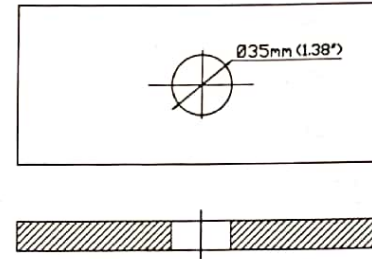


cross screwdriver

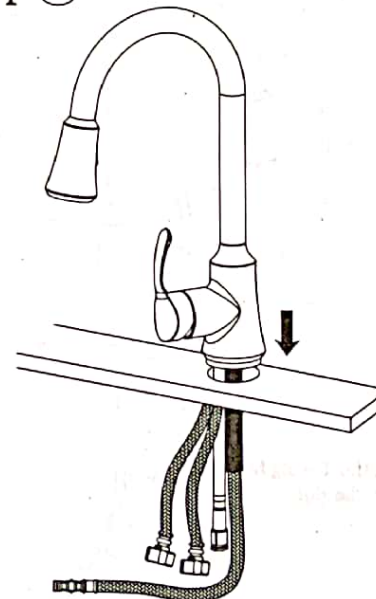
Drawing



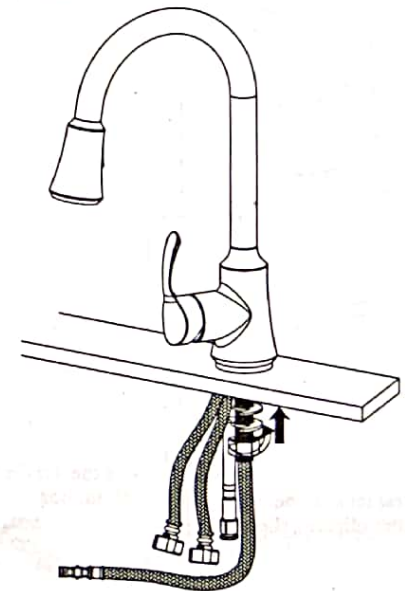
step ①



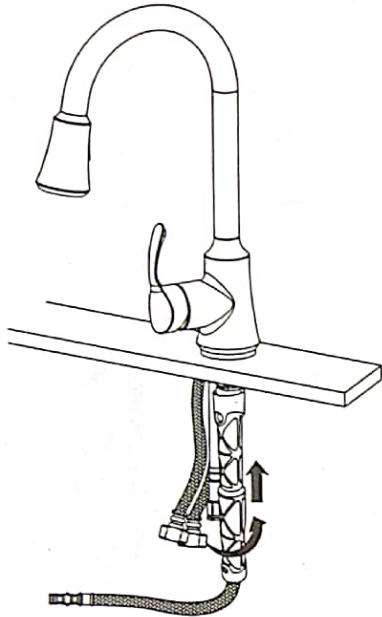
step ②



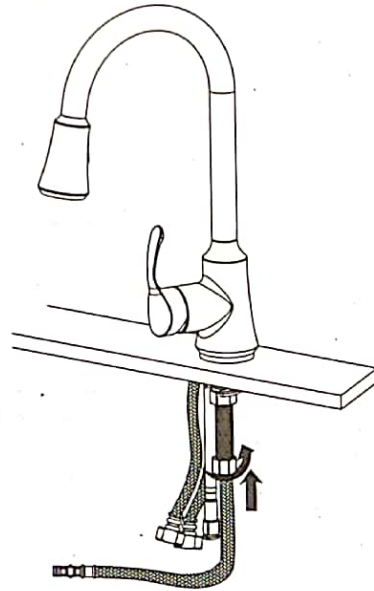
step ③



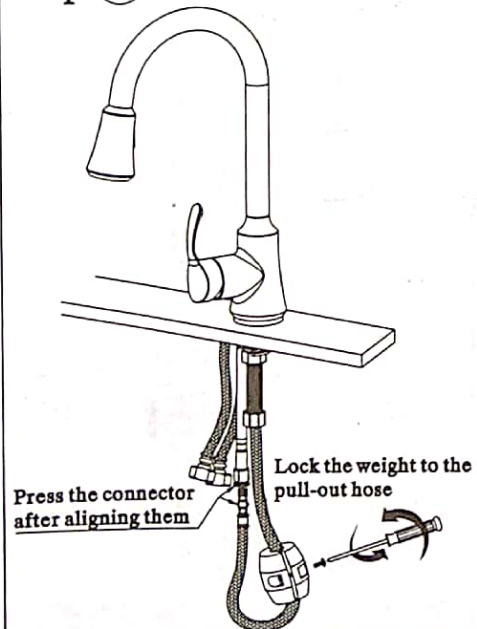
step ④



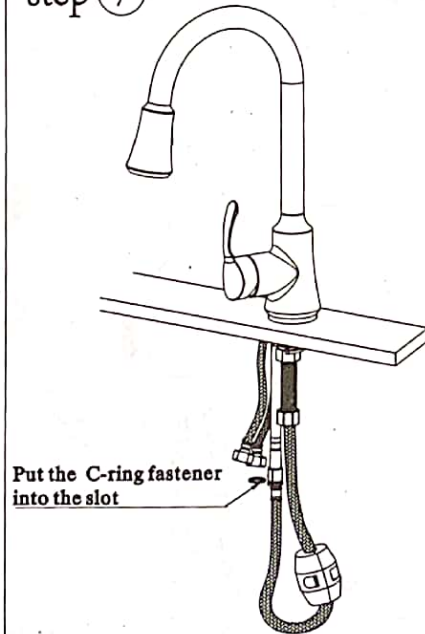
step ⑤



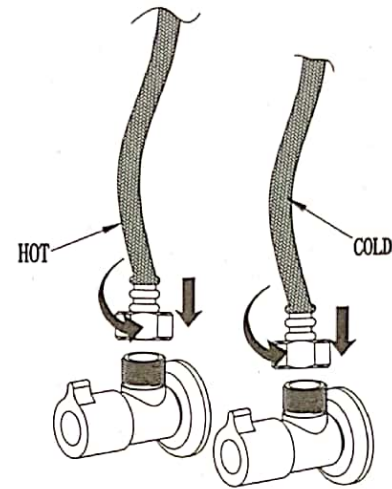
step ⑥



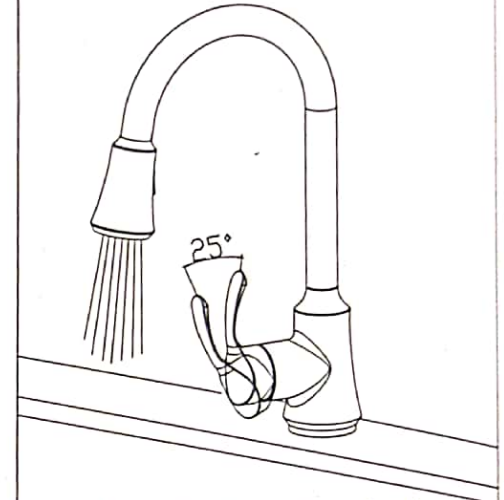
step ⑦



step ⑧



step ⑨



Switch on the faucet to check possible leakage

Note:

Please removing all of the sand, silt and other things from the water hose before assembling, to avoid blocking the faucet and effecting water rate. Please use the special tools to disassemble it and wash with pneumatic equipment, if the faucet blocked.