

Product description:

Nominal diameter: G3/8 (15mm)

Nominal pressure: 0.6 Pma

Water temperature: $\leq 80^{\circ}\text{C}$

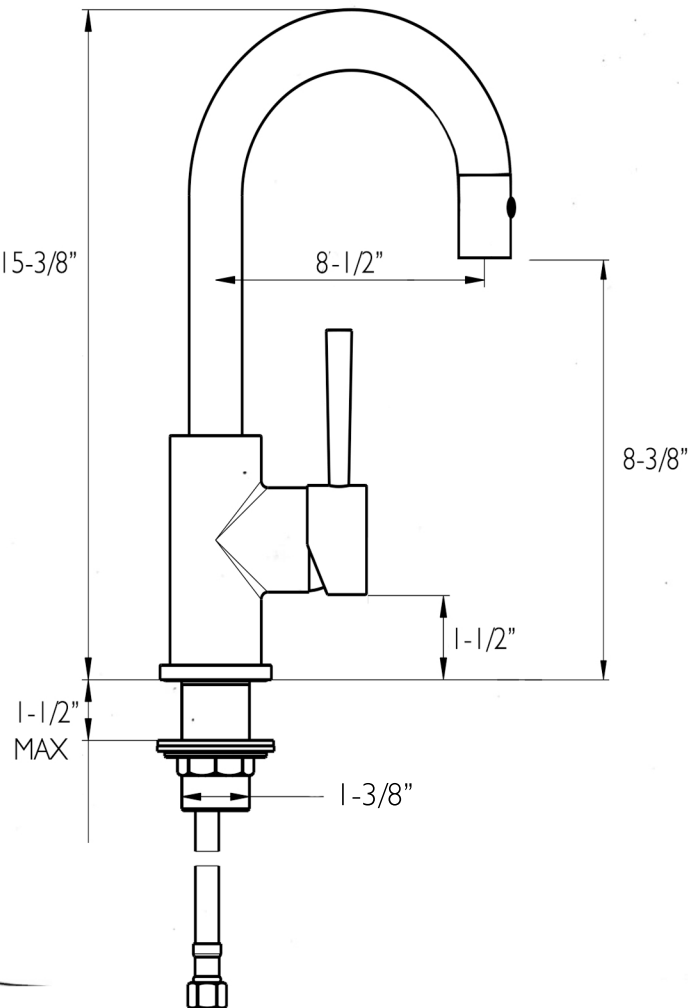
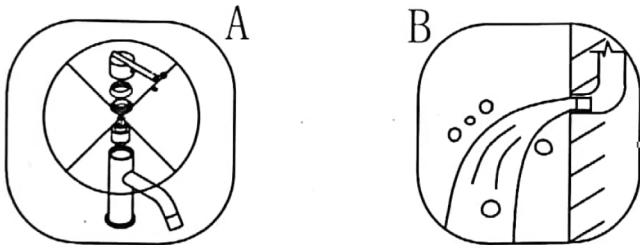
Inspection standard: GB18145-2003 rules

Installation notes:

The valve core of the main body has been checked and debugged by the factory. Please do not disassemble and assemble by yourself. As shown in picture A

Before installing the faucet, Please make sure to clean the impurities, sludge, and sand which are embedded in the water pipe so as not to block the faucet and influence the water outlet function. As shown in picture B

The working pressure of faucet is 1-6kg/cm - (including hot and cold waterways).



Troubleshooting

If the water output is small, loosen the water inlet valve

No water, water bifurcation or water output is small please remove the bubble shell, rinse the impurities on it.

The way to replace ceramic valve core: Please remove the red and blue mark on the top of the handle, remove the handle, loosen the semicircle cover and the six angle lock nut, pull out the ceramic valve core and replace the new ceramic valve core, then install it according to the original steps.

Under the condition of insufficient water pressure, turn on water outlet bubble shell Take out the water regulator to increase the water



Warning

The user will be fully responsible for any damage to your product if you without regard to the following points of attention in the course of installation and use

The tap working medium is water. Do not use on another medium so as to avoid damage to the faucet

When the assembly is completed, turn on the water and check the taps at 0.5-0.6Pma pressure. Make sure there is no leakage after 5-6 minutes. Otherwise, water leakage from the faucet may cause damage to your property.

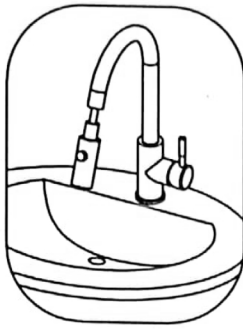
High-pressure area (higher than the faucet working water pressure, "Conditions for reference manual setting") should be closed the water inlet valve and install pressure relief device. Avoid breakage or leakage of faucets.

Attention should be paid to when use faucets in cold areas, freeze may cause damage to the faucet, water leakage. Please warm the room on a low-temperature night, or turn off the main valve and drain the water in the faucet, thus avoiding the breakage or leakage of the faucet due to the freezing of the low temperature surface.

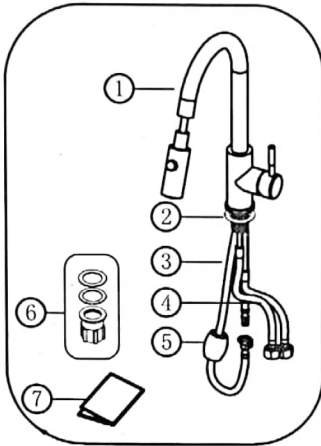
For the wall-mounted faucet, The distance between the hot and cold water inlet should be horizontal and parallel, otherwise, it will damage the faucet and the turning foot

Basin Faucet

1. After you open the product, Please compare the accessories listed in the standard accessory list. Check that the parts are complete. If there is any defect, please contact customer service immediately. As shown as follow



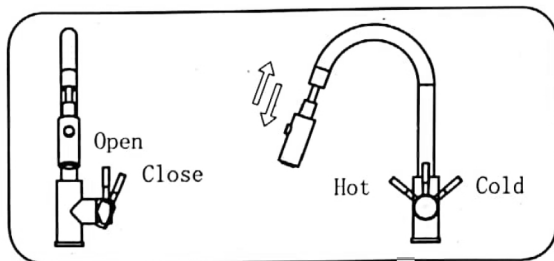
| serial number | Name | Quantity |
|---------------|------------------|----------|
| 1 | Faucet | 1 |
| 2 | Joint ring | 1 |
| 3 | Water hose | 1 |
| 4 | Inlet pipe | 2 |
| 5 | Shot-put | 1 |
| 6 | Fixing component | 1 |
| 7 | Instructions | 1 |



2. The basin should be matched with the installation size of the product.

Instructions:

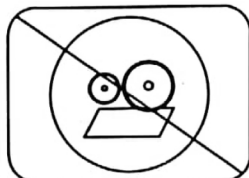
1. Open the water, check for whether leaks at each connection.
2. Turn up the handle to turn on the tap, The greater the angle, the greater the flow; on the contrary, the smaller the angle, the smaller the flow until it closes; when turning up the handle, adjust to the left, hot water supply increased, to the right, cold water supply increased.



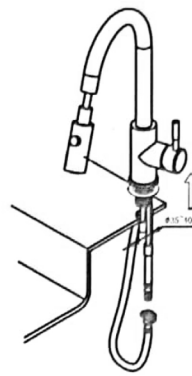
Maintenance

Clean the surface dirt with water and the soft cloth
The following detergents can be used to remove surface dirt.

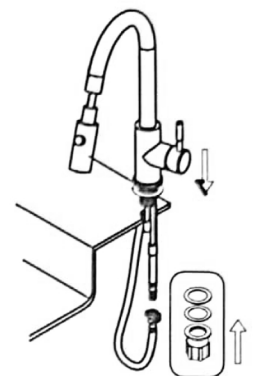
- A mild liquid detergent
- Colorless glass detergent
- Detergent that does not have abrasive action



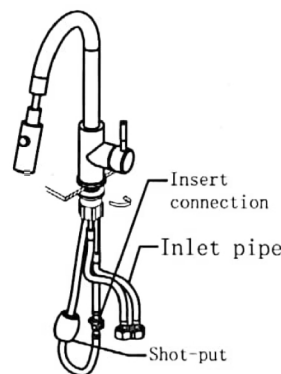
Installation steps:



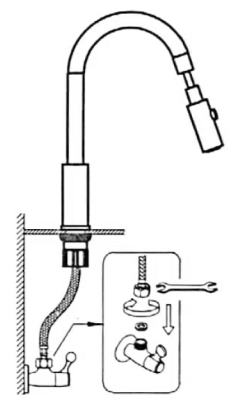
1. Before installing, please make sure the basin is drilled with a hole with a diameter of 35-40mm, and then remove the fixing components at the bottom of the main body, then insert the gasket into the base mounting column."



2. Before installing, please make sure the basin is drilled with a hole with a diameter of 35-40mm, and then remove the fixing components at the bottom of the main body, then insert the gasket into the base mounting column."



3. Tighten the nut on the fastening system with a wrench. Tighten the cross screw on the fastening system with the cross screwdriver and strengthen the fixing strength..



4. Connect the two water inlet hose of the faucet main body to the angle valve. Follow the tips on the handle of the tap, red point connecting hot water pipe, blue point connects the cold water pipe.