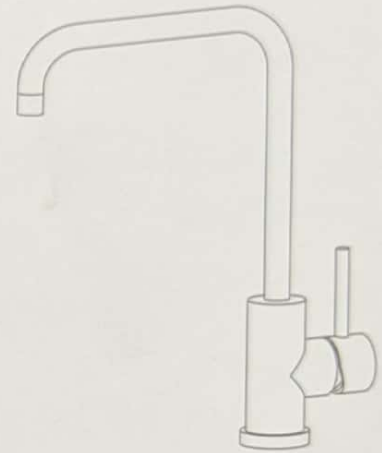
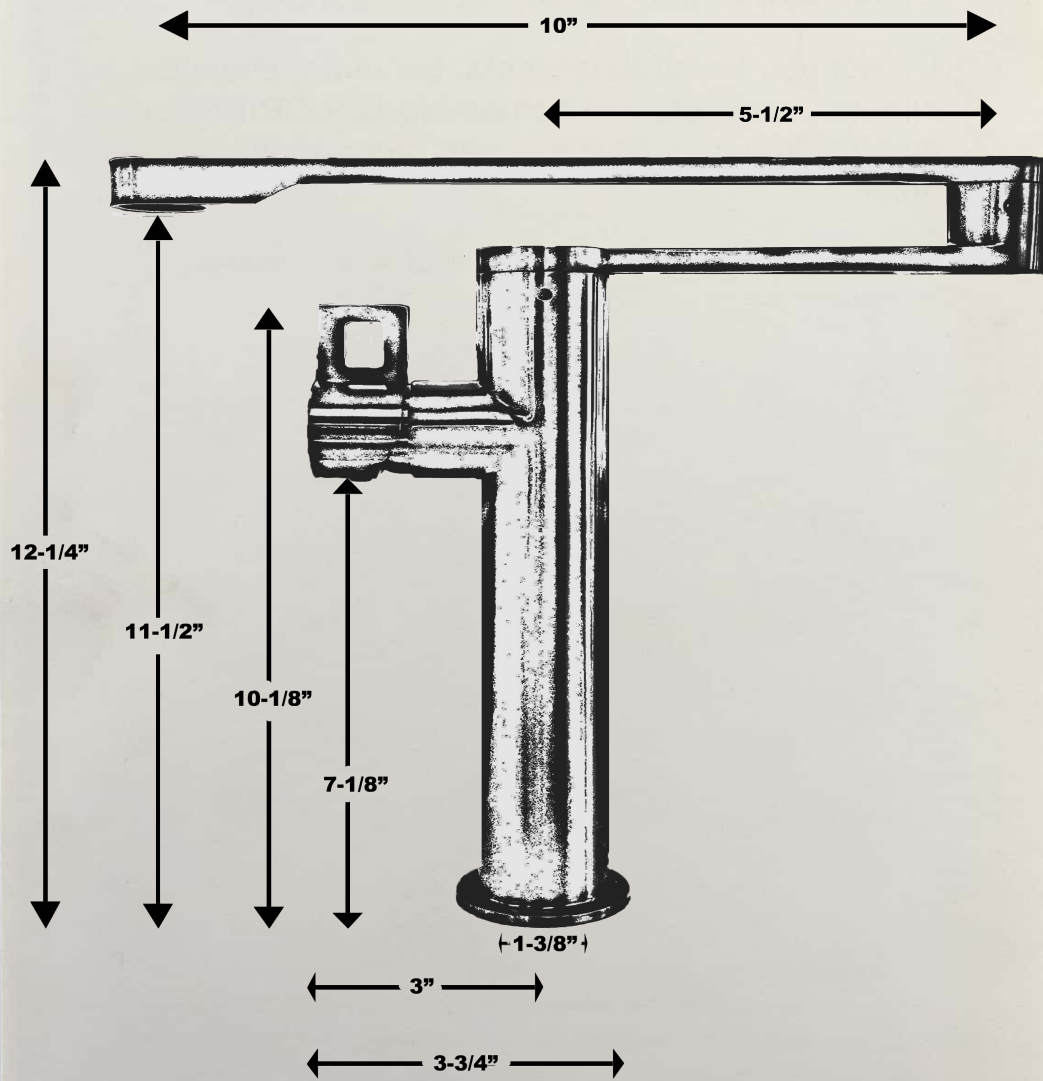
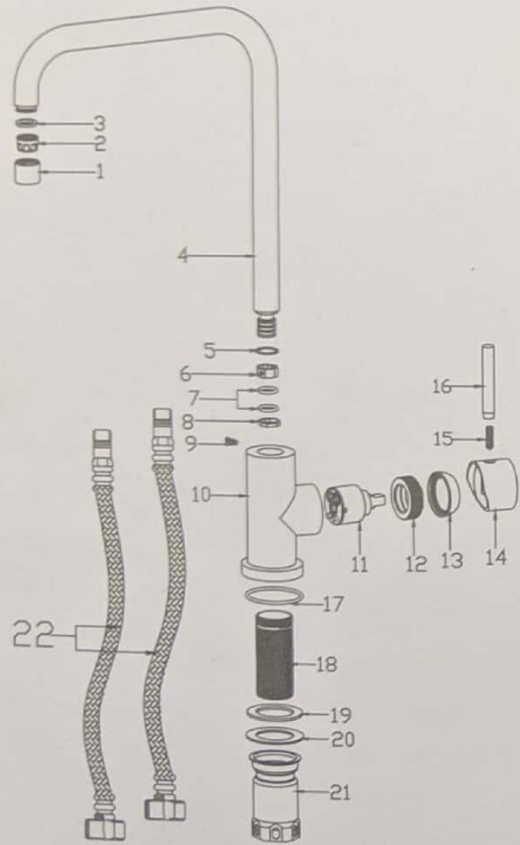


Installation Manual



Stainless steel kitchen faucet

Spare parts

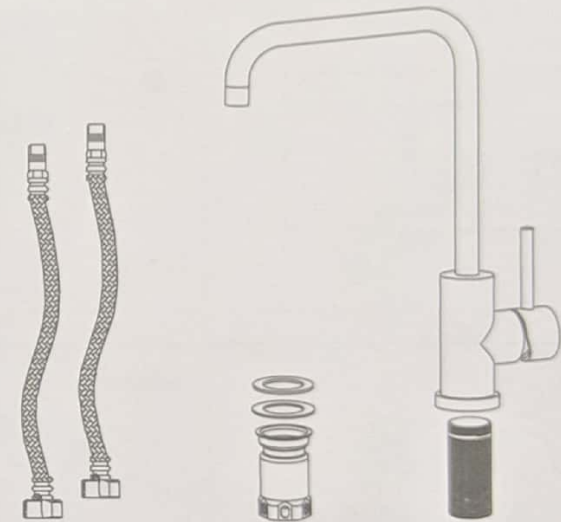


| NO. | NAME |
|-----|-----------------------|
| 1 | Aerator house |
| 2 | Aerator |
| 3 | Washer |
| 4 | Spout |
| 5 | O-ring |
| 6 | Plastic C-ring |
| 7 | O-ring |
| 8 | Plastic C-ring |
| 9 | Inner hex Screw |
| 10 | Body |
| 11 | Cartridge |
| 12 | Lock Nut |
| 13 | Cartridge cap |
| 14 | Handle base |
| 15 | Inner hex Screw |
| 16 | Handle |
| 17 | O-ring |
| 18 | Threaded tube |
| 19 | Rubber washer |
| 20 | Steel washer |
| 21 | Fixing nut |
| 22 | Flexible supply hoses |

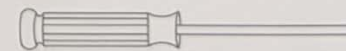
Installation

Before installation

Remove all contents from the package and check for completeness



Tools you need



Cross screwdriver

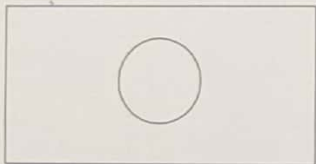


Tape

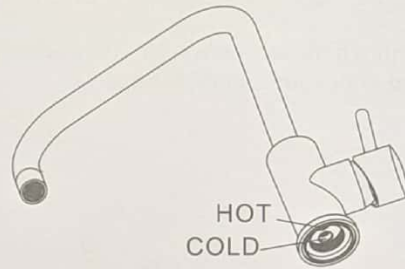
Installation steps

Step ①

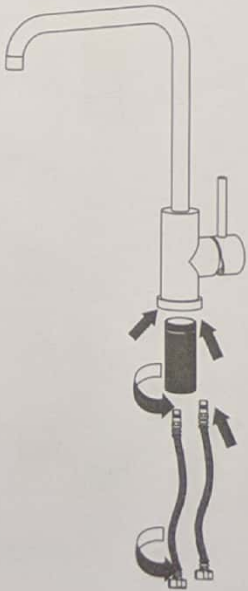
Cut a mounting hole 35mm (1-3/8") in diameter in the desired position



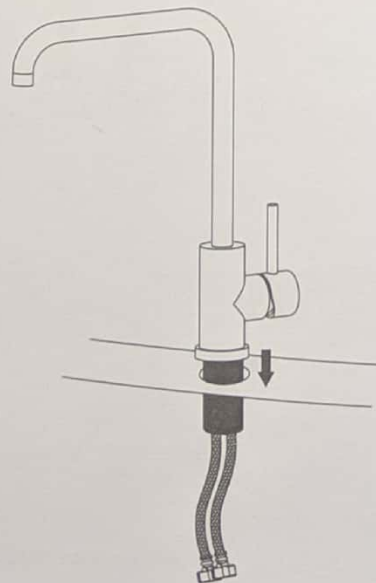
Step ②



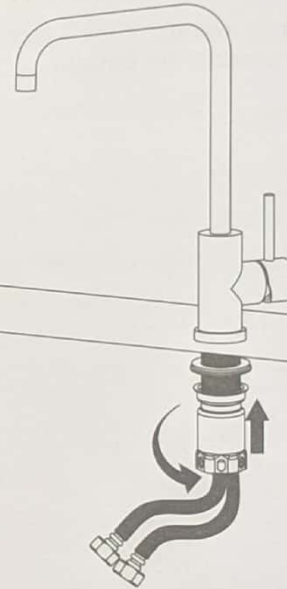
Step ③



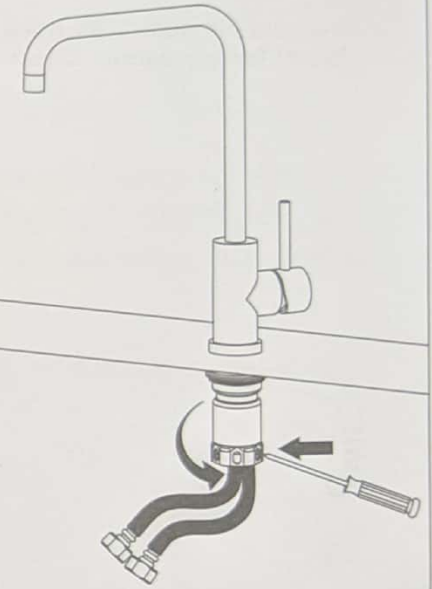
Step ④



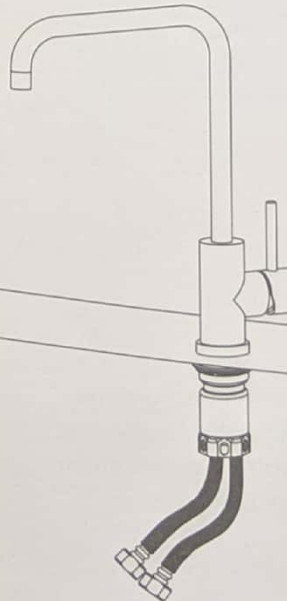
Step ⑤



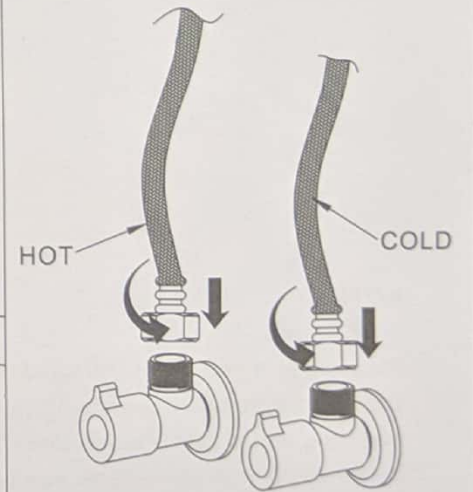
Step ⑥



Step ⑦

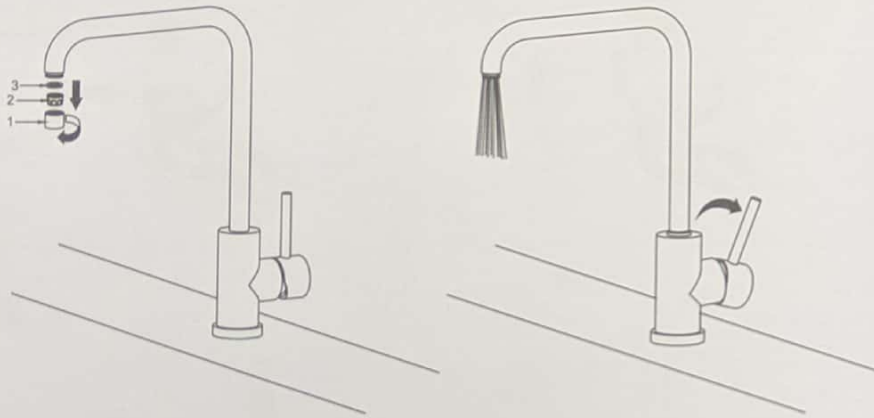


Step ⑧



Step ⑨

Remove the aerator by hand, turn on the water and flush the faucet for any debris. Check for leaks, and reinstall the aerator.



NOTE:

Please removing all of the sand, silt and other things from the water hose before assembling ,to avoid blocking the faucet and effecting water rate.Please use the special tools to disassemble it and wash with pneumatic equipment,if the faucet blocked.

General Maintenance

- Clean aerator periodically for any build-up.
- Do not use harsh detergents, solvents, chemical agents, especially any containing CHLORINE, or metallic sponges as these can damage the surface finish.
- Clean only with soft sponge and soapy water.