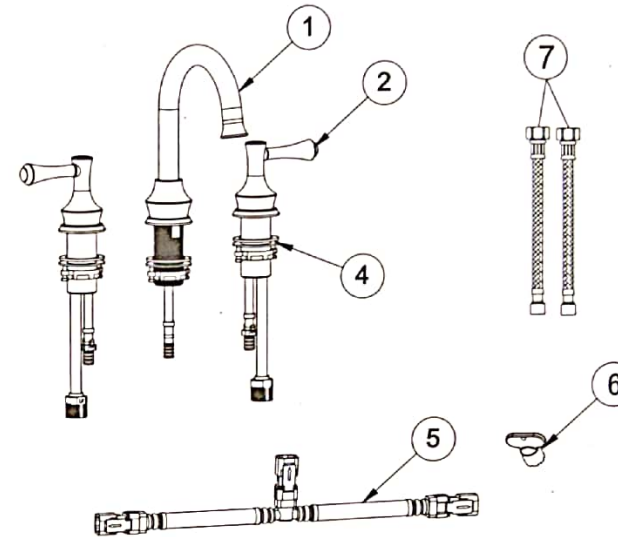


## 1. Installation Attention

1. Open the product packing; check for all the accessories according to the accessories list. If you lack any accessories, please contact your local supplier.
2. The cartridge is the main body it has been tested and adjusted in the factory, do not remove it or take it apart.
3. Before installing your new mixer, flush through the supply pipes to ensure the removal of debris to avoid and prevent clogs.
4. After installing, check the supply pipes to avoid any leakage.
5. Inlet water pressure:  $0.05\text{Mpa} < \text{inlet water pressure} < 0.75\text{Mpa}$  (including cold water pressure).

## 2. Accessories list

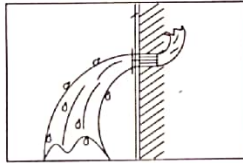


7	Hose
6	Plastic spanner
5	Hose
4	valve
3	Base
2	Handle
1	Spout
ITEM	DESCRIPTION

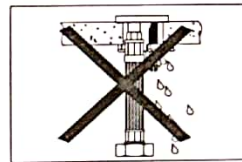
## 3. Dimension drawing



Do not take the faucet apart

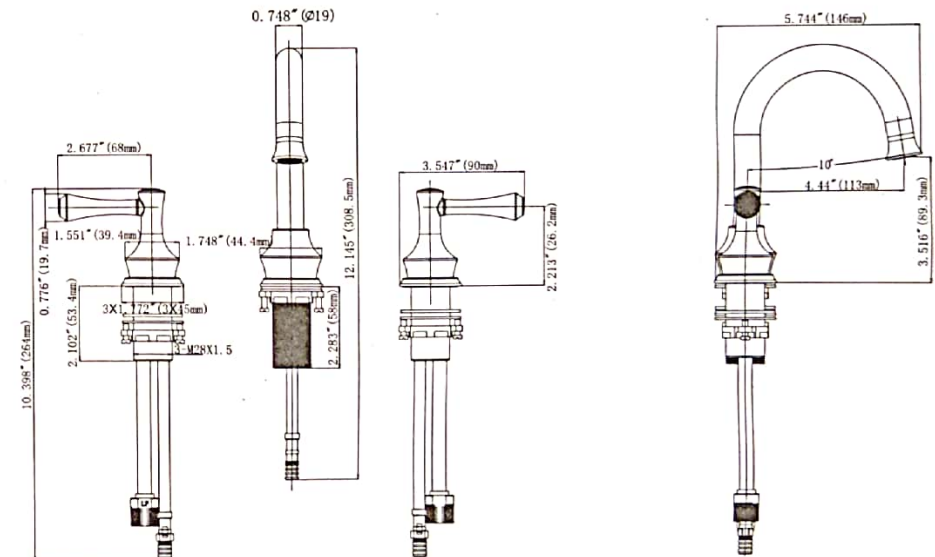


Keep the supply pipes unblocked



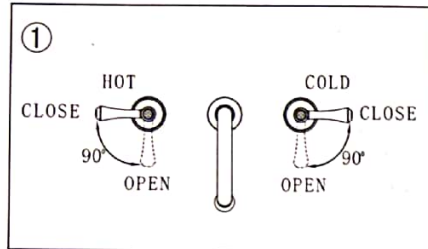
No leakage in the connection

Note: We have been enhancing our products quality by constantly improving the design and performance of our products. We reserve the right to change specifications, product descriptions, product quality, pricing and application at any time without prior written or oral notice.

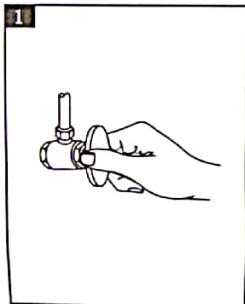


## 4. Instruction

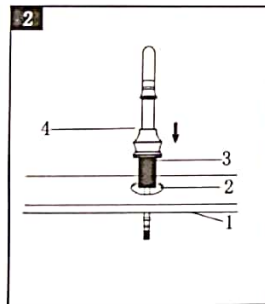
1. Turn the left handle counterclockwise to get hot water.  
Turn the right handle clockwise to get cold water.



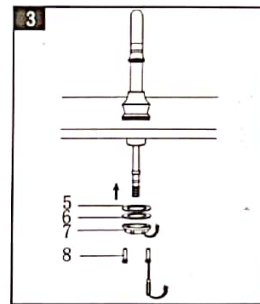
## 5. Installation steps



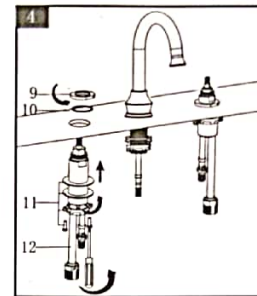
You should clean all the dirt.  
Turn off the water supply valves.  
This is usually found near the  
water meter. If you are replacing  
an existing faucet, remove the  
faucet from the sink and clean  
the sink surface thoroughly.



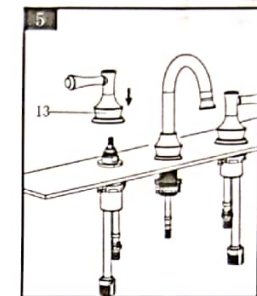
Drill a  $\varnothing 33\text{-}\varnothing 35\text{mm}$  hole (2) in sink  
(1). Install the screw (3) into the  
faucet body (4). And screw them  
firmly. Insert the them through the  
hole(2).



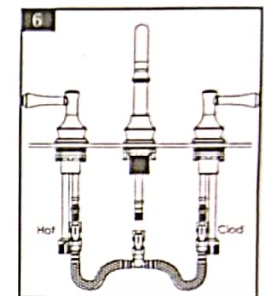
Put all hose through the plastic  
gasket (5) then through metal  
gasket (6), finally screw the fitting  
nut (7), tight it with screw(8).



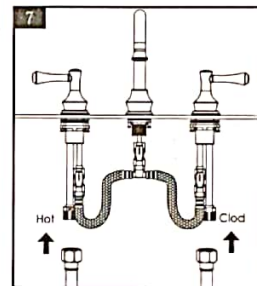
Put the locknut(9), O-ring(10) on the valve  
body(12) successively. Put the valve body  
(12) through the  $\varnothing 28\text{mm}$  hole from under.  
And tight the locknut(9).



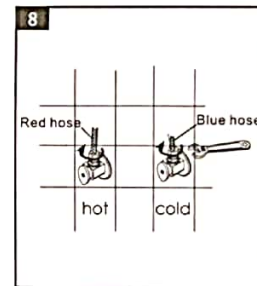
Lock the handle(13) on the valve  
bodies firmly.



Connect the flexible hoses to the  
valve bodies . Left hose is for hot  
water and right for cold .



Connect the valve bodies with  
valve outlets with flexible hoses.



Clean and connect them to the  
water supplying valve(left to hot  
water and right to cold).

**Warranty:** This warranty cover faucets only for a one year period.  
Proof of purchase must accompany all warranty claims. Warranty  
will provide the parts necessary to put the faucet back in good  
working condition only, **excluding labor charges.**