

List of main installation accessories

NO.	Description	Qty	Function
1	Expansion screw	4	Mounting of frame and wall bracket
2	Wall bracket	2	Fixation of frame
3	Angle valve	1	Fill valve inlet and shut-off
4	Cistern cover	1	Airproof tank and mounting of locking bracket
5	Socker head screw	2	Mounting of frame and locking into wall bracket
6	Plastic holder	1	To reserve space for installation of actuator at wall building
7	Plastic holder cover	1	To prevent dust and impurities into tank at wall building
8	Connecting screw	2	To mount ceramic bowl
9	Protective cover	2	To protect connecting screw at wall building
10	Ceramic bowl fixing accessories	2	To mount ceramic bowl
11	Straight tube	1	To joint cistern into ceramic bowl
12	Connecting pipe	1	(cutting in accordance with wall thickness)
13	Piping stopper	2	To reserve space for straight tube and connecting pipe
14	Draining syphon	1	To discharge liquid and solid waste from ceramic bowl.
15	Draining syphon holder	1	
16	Mounting bracket	1	To mount draining syphon

Important instruction:

1. Please adhere to the following installation instructions. We shall not be responsible for failures and loss that are contributed to improper installation.
2. Please confirm the fixation location of frame prior to installation and obtain the finished floor surface. Draw FFL on installation wall and follow it as baseline from ZERO (0) level.
3. The instructions have been composed based in the latest product specifications. We reserve the right to make modifications to the packaging and specifications without providing prior notification.

NOTES:

1. Mount before bricks building.
2. All size unit in MM.
3. Follow the material product, should there is an unconformity with drawing.

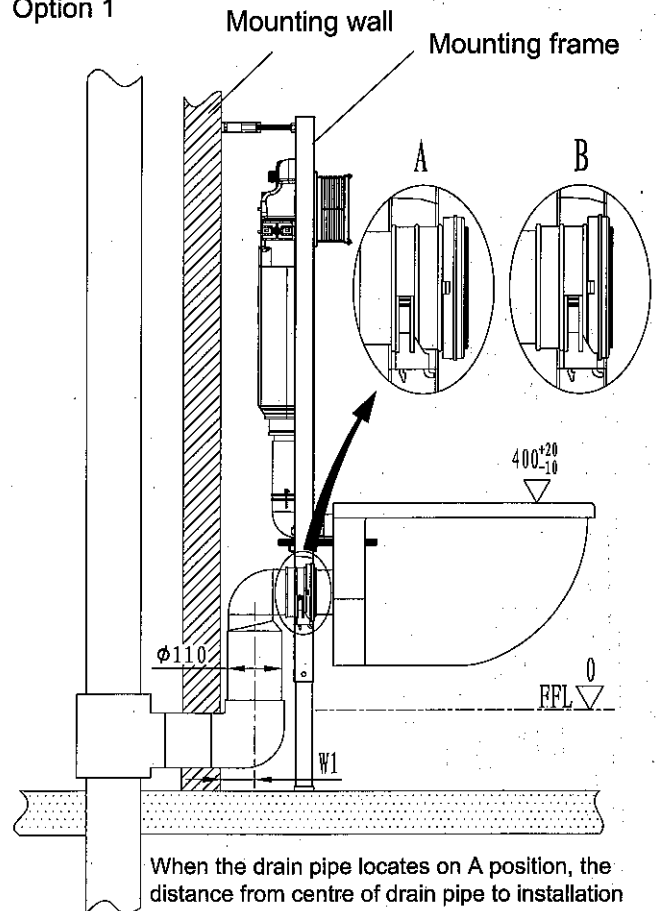
Finished Floor.

⚠ FFL 0 = FINISHED FLOOR

1. Drainage System Layout

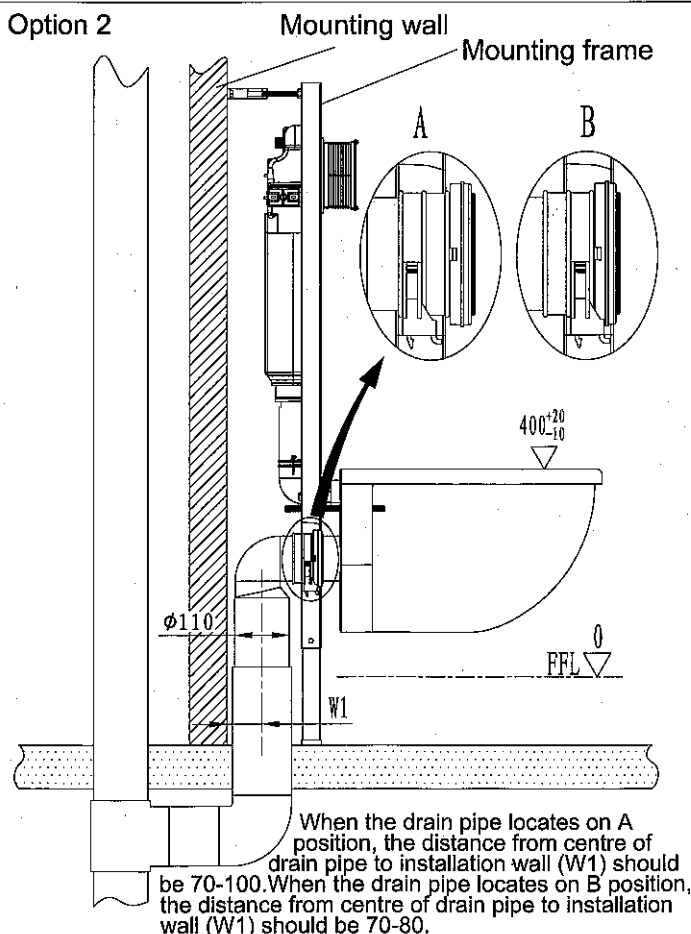
Drawing 1 to 3 are three different installation systems for drain pipe. Customer should confirm whichever installation system according to drainage outlet position. If drainage outlet does not fall within the three systems, customer should follow one of three drainage system layout to correspond installation of our concealed cistern.

Option 1



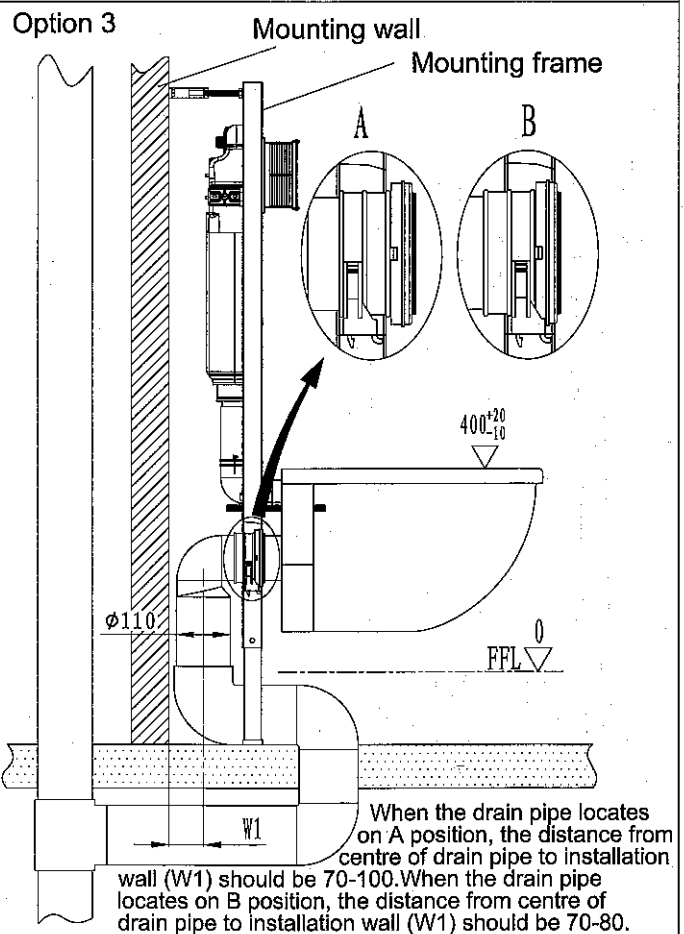
When the drain pipe locates on A position, the distance from centre of drain pipe to installation wall (W1) should be 70-100. When the drain pipe locates on B position, the distance from centre of drain pipe to installation wall (W1) should be 70-80.

Option 2



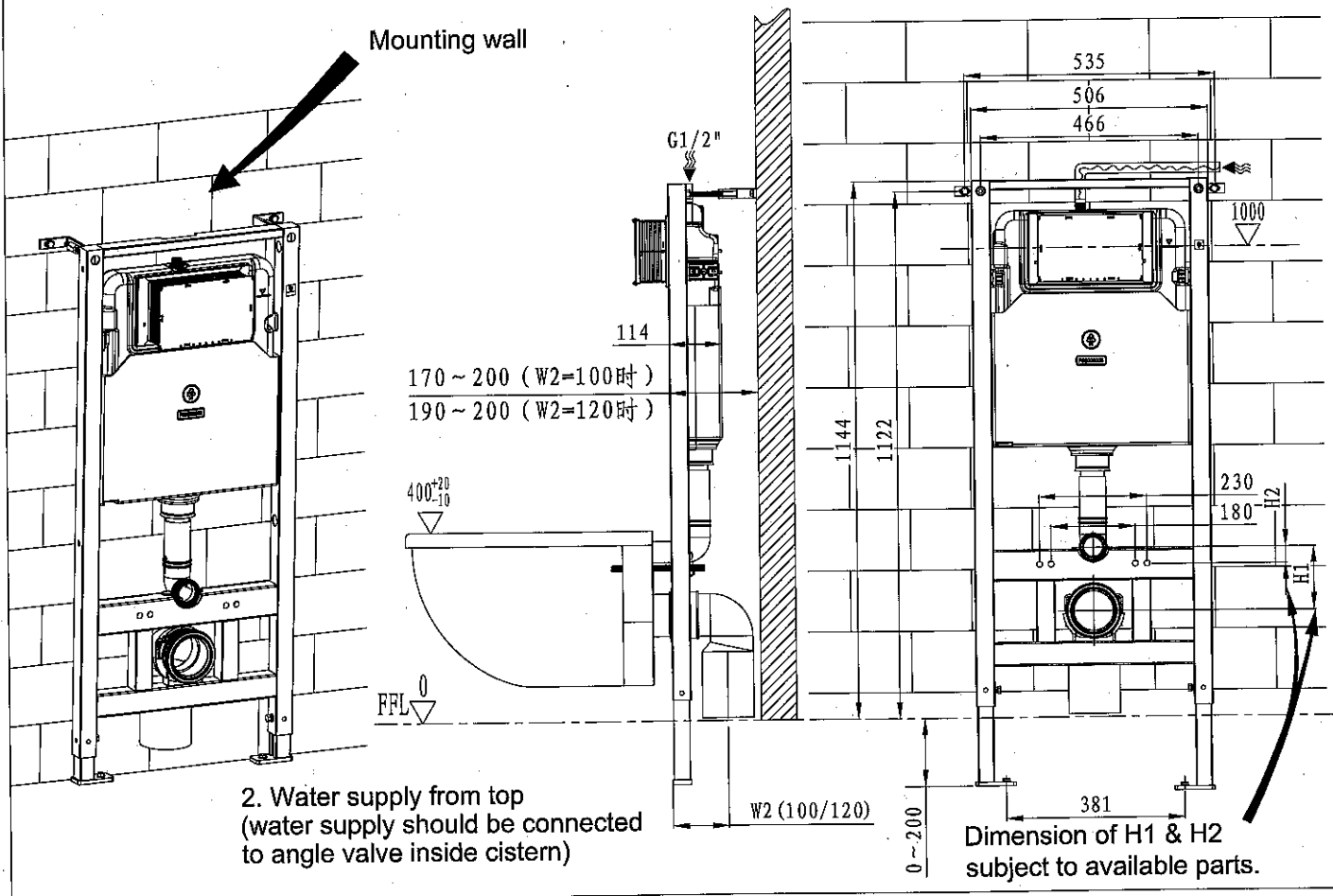
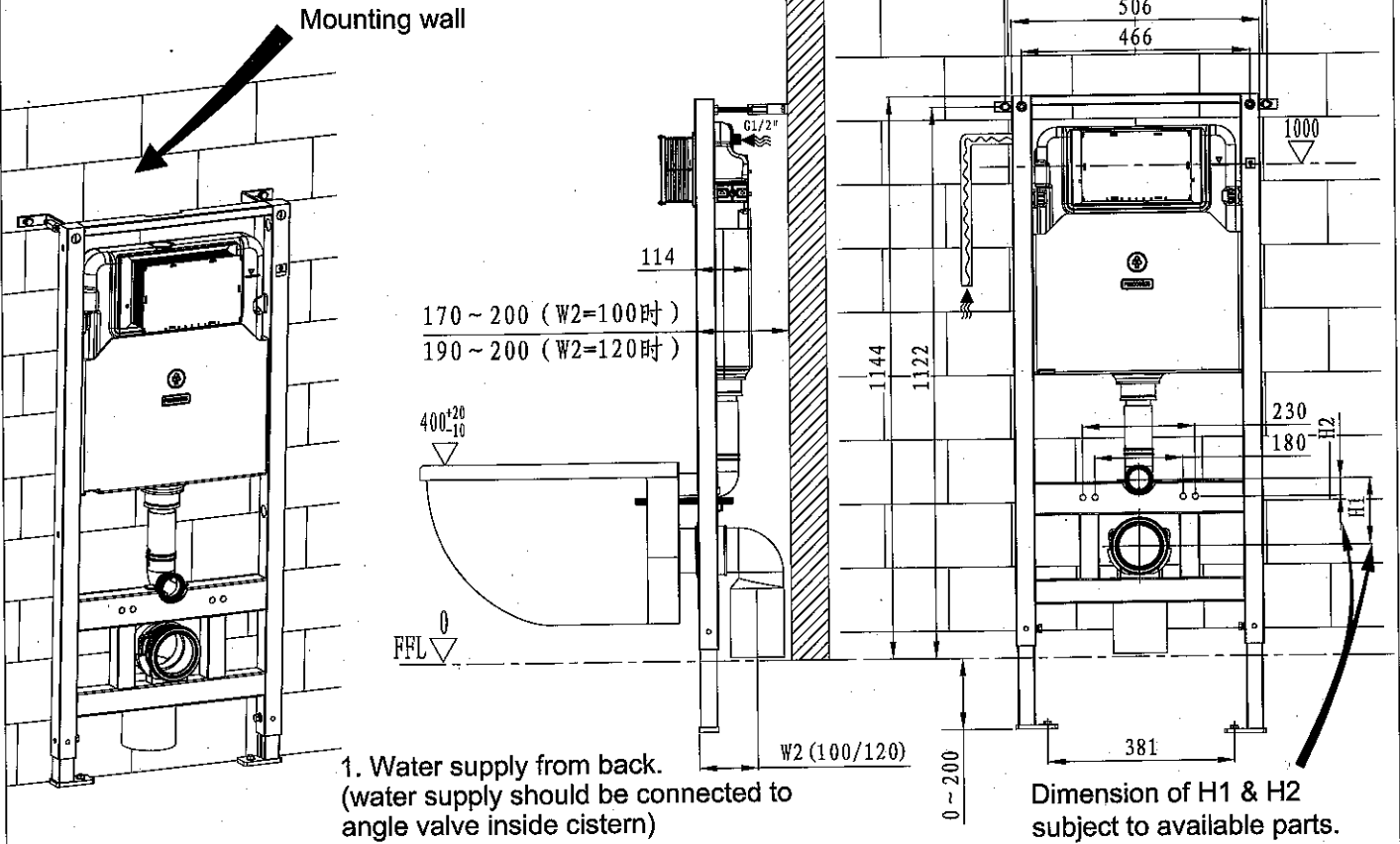
When the drain pipe locates on A position, the distance from centre of drain pipe to installation wall (W1) should be 70-100. When the drain pipe locates on B position, the distance from centre of drain pipe to installation wall (W1) should be 70-80.

Option 3



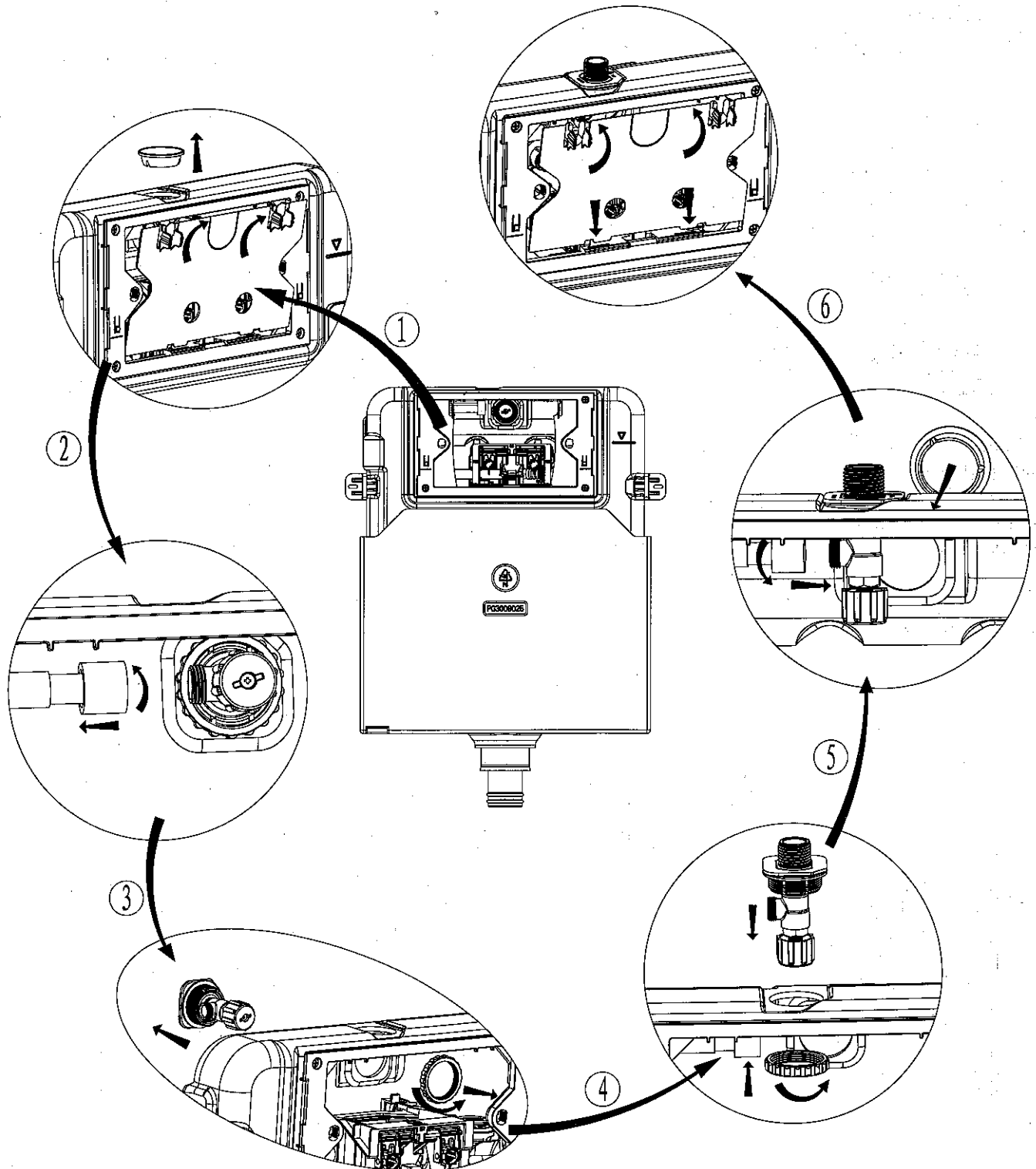
When the drain pipe locates on A position, the distance from centre of drain pipe to installation wall (W1) should be 70-100. When the drain pipe locates on B position, the distance from centre of drain pipe to installation wall (W1) should be 70-80.

2. General dimension and water supply drawing

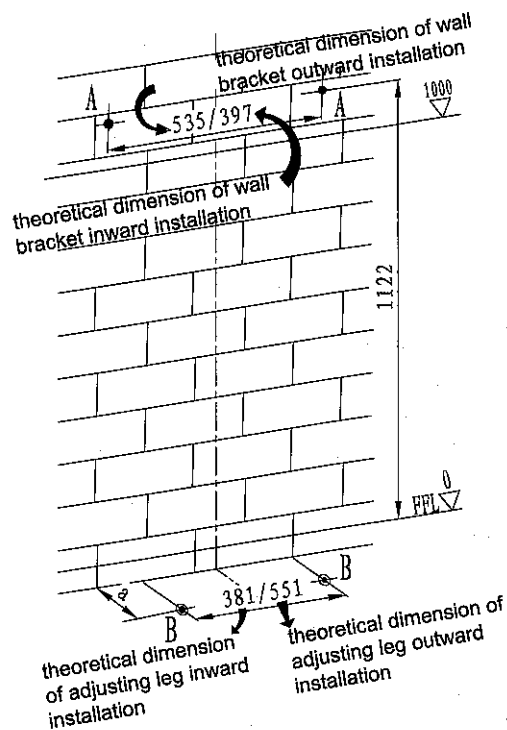


3. Switch between back water supply and top water supply

☆Note: In case the back water supply is not feasible in actual installation, switch to top water supply referencing below chart.



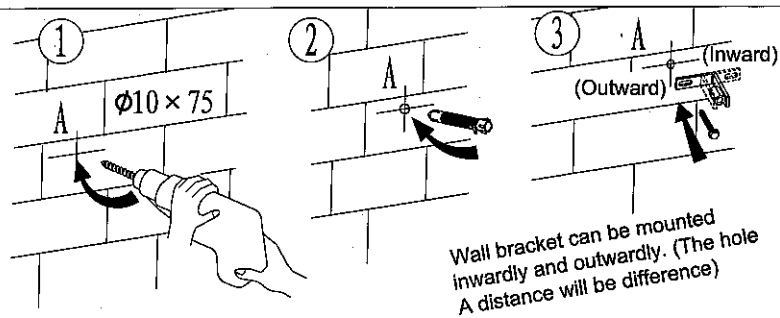
4. Drill holes on mounting wall and floor and install expansion screws



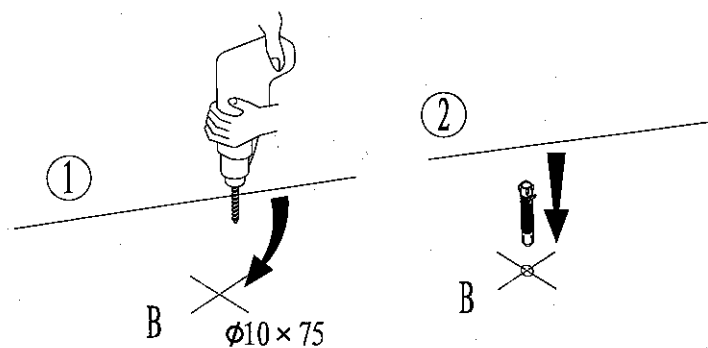
A dimension according to practical location of flushing pipe.

☆Note: Above drilling are theoretical dimensions of frame mounting.

Please follow by the practical location of frame.

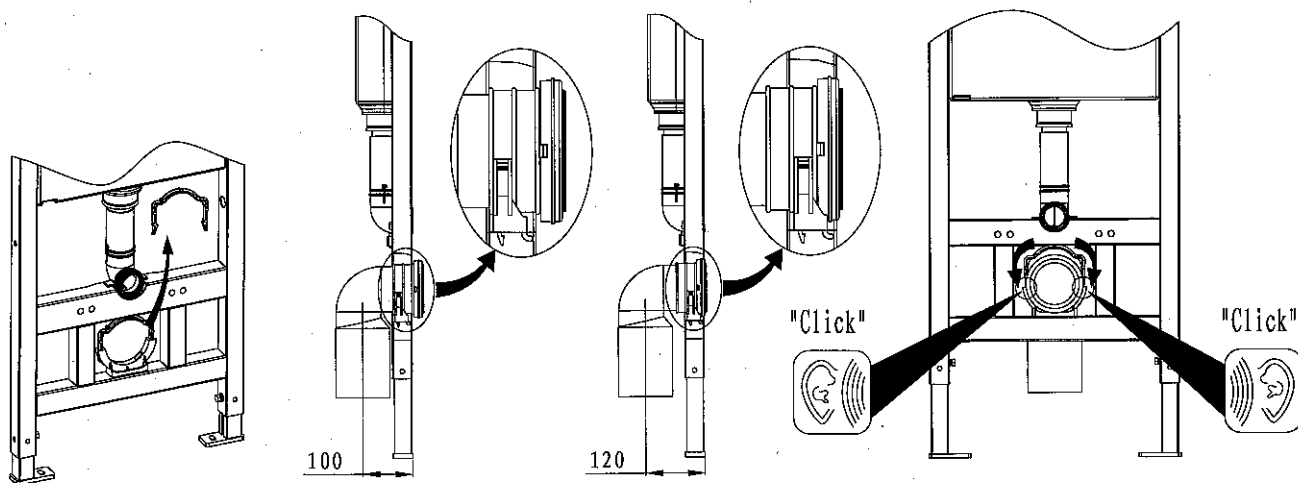


Drill a hole of Ø10×75 → insert expansion screw → fix the wall bracket into wall



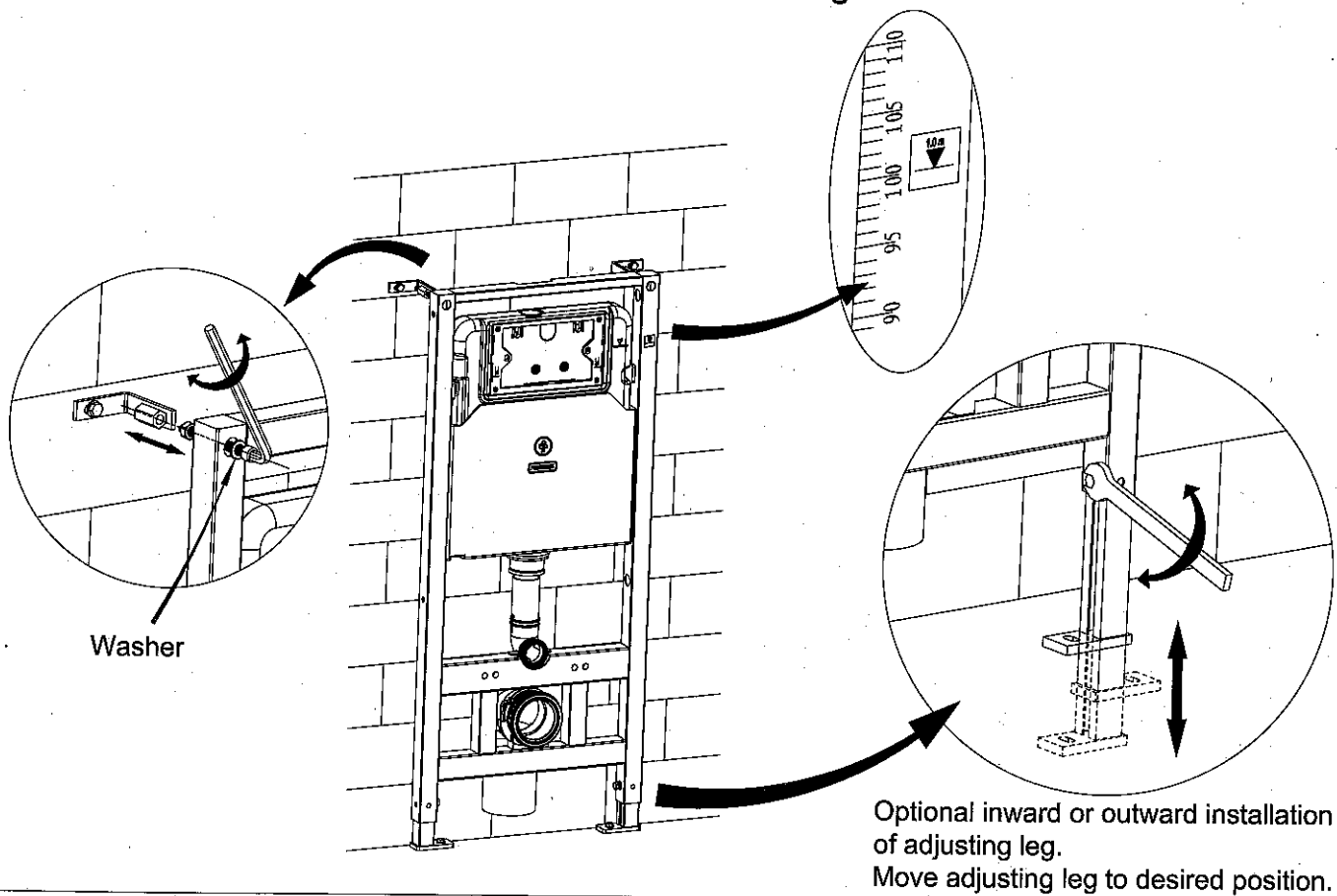
Drill a hole of Ø10×75 → insert expansion screw

5. Installation of draining syphon

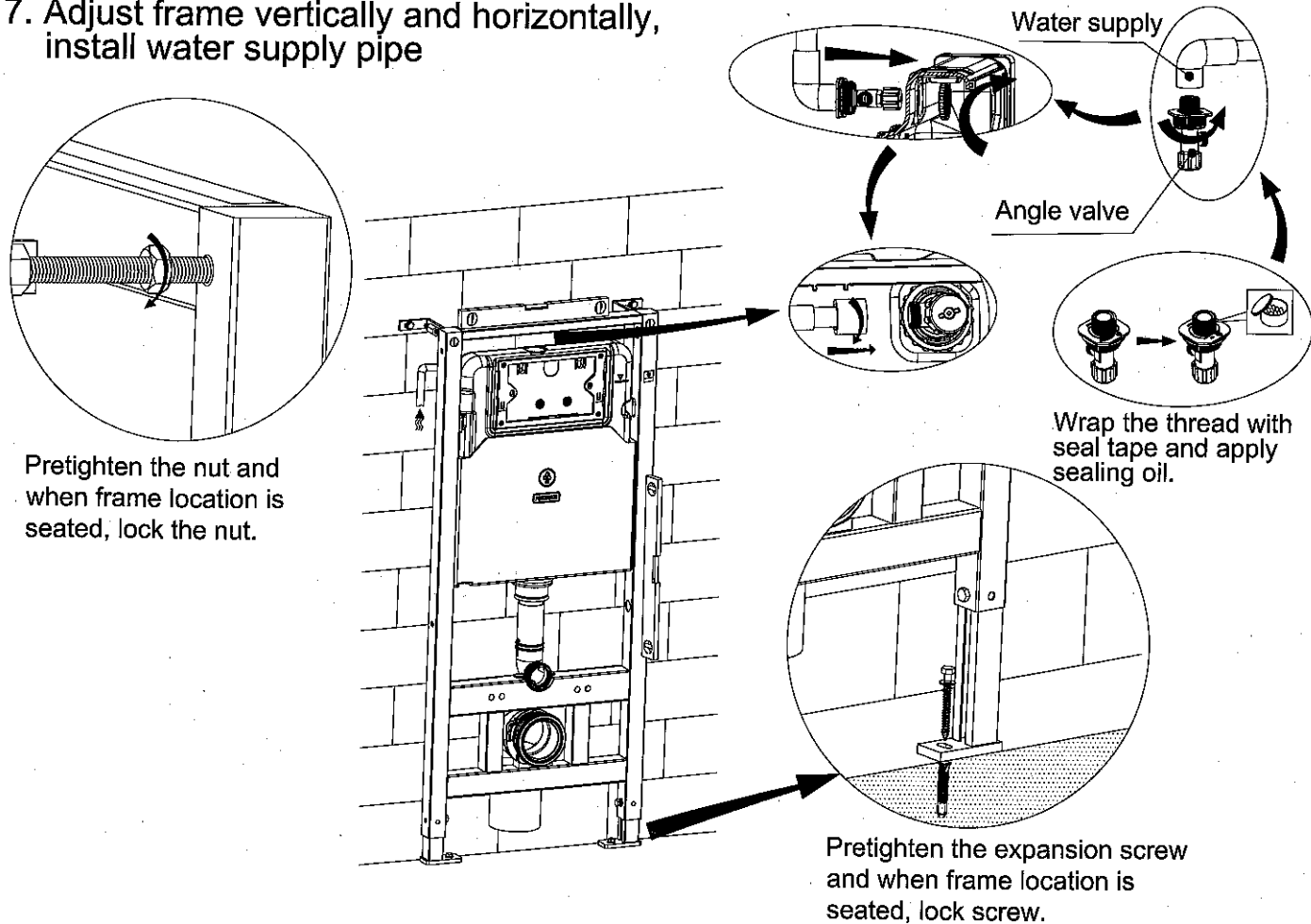


Remove the mounting bracket → Mount draining syphon (optional installation distance of 100 or 120) → Fasten the mounting bracket

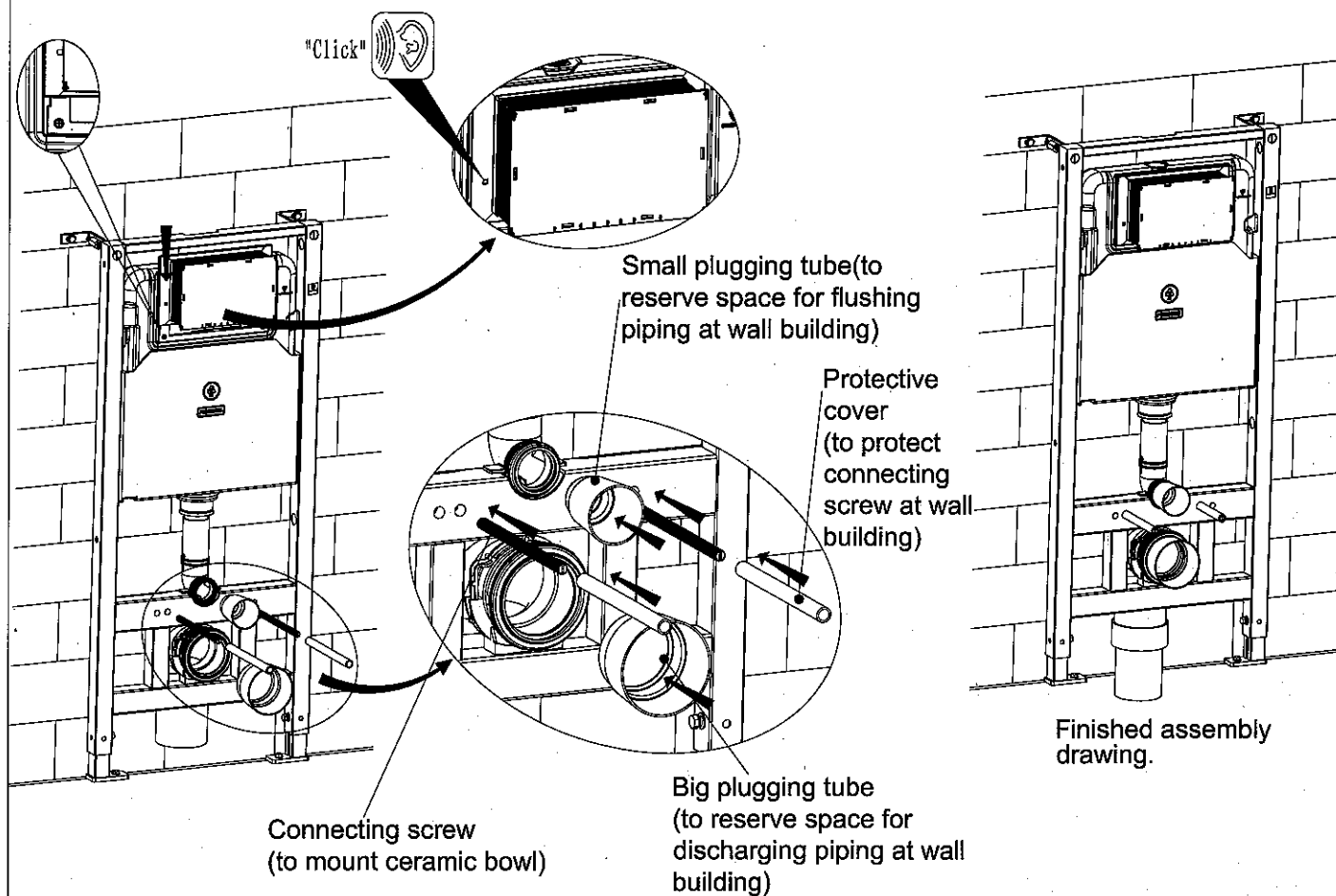
6. Adjustment of socket head screw and floor fixing accessories



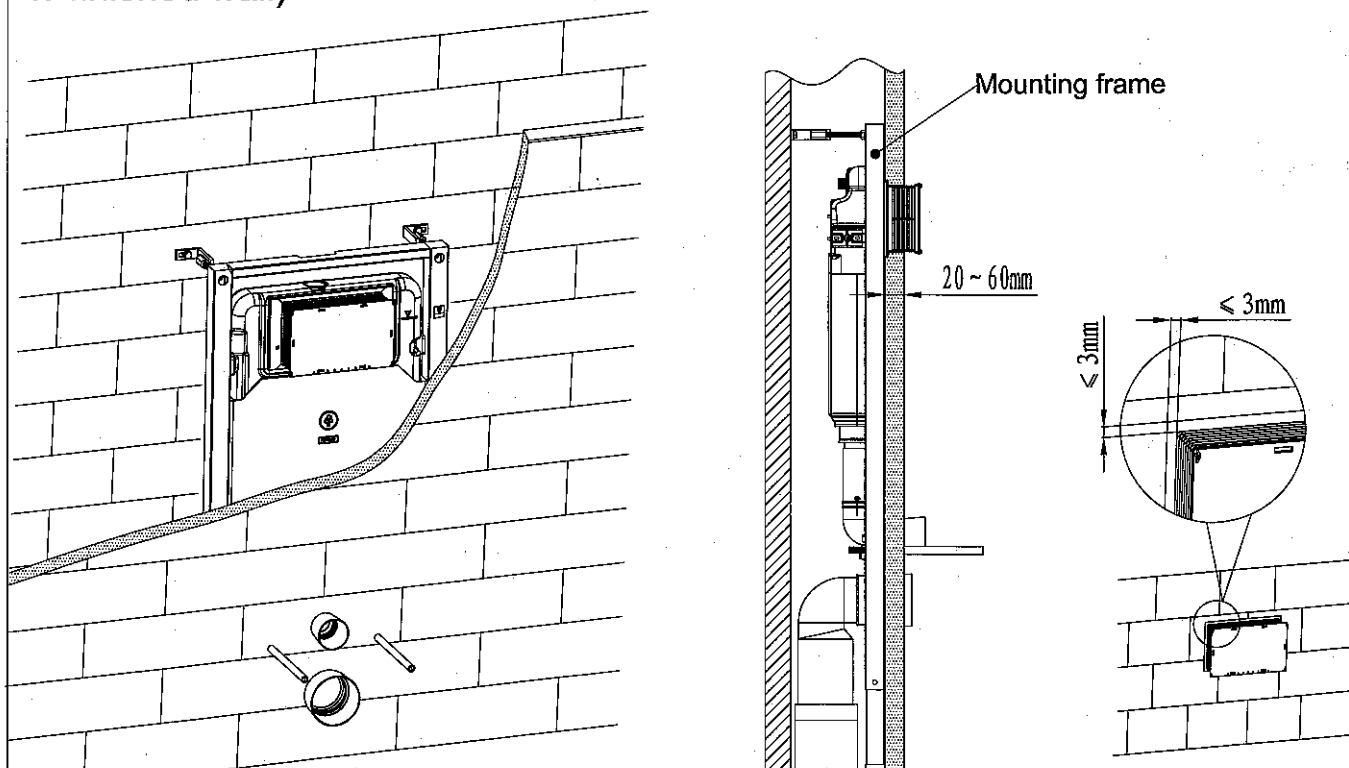
7. Adjust frame vertically and horizontally, install water supply pipe



8. Mounting of installation accessories

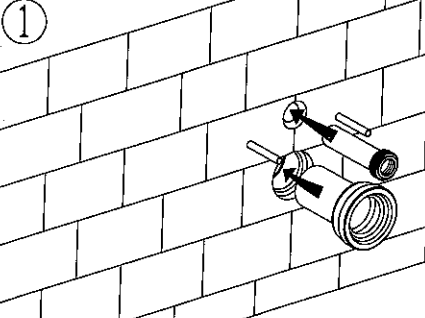
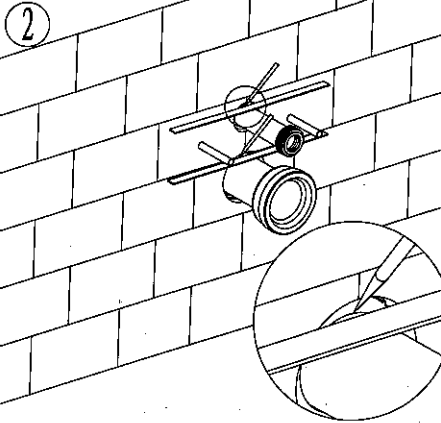
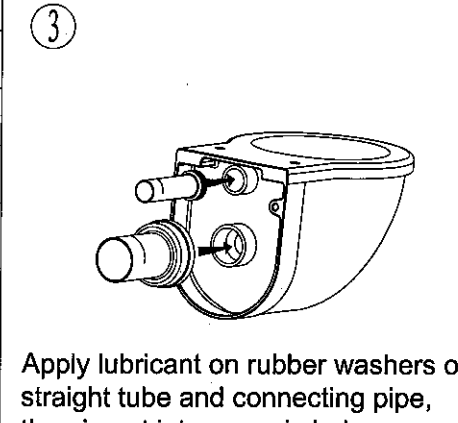
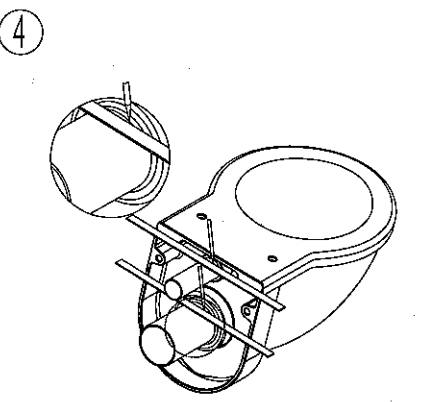
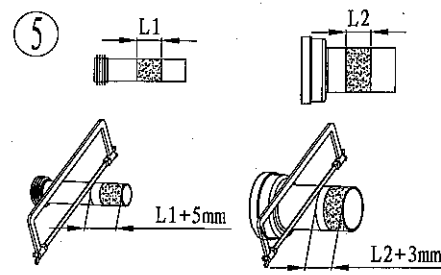
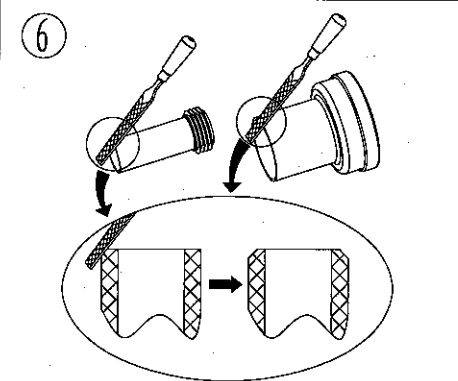
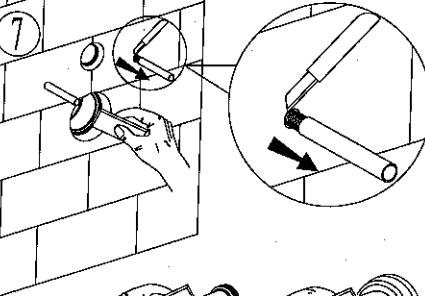
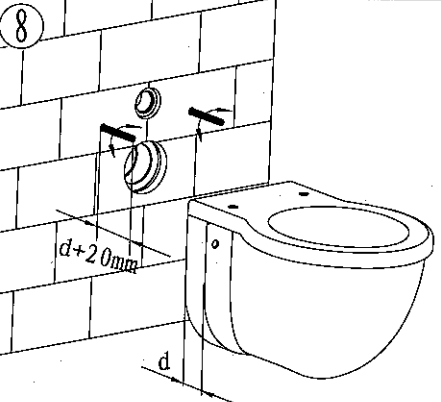
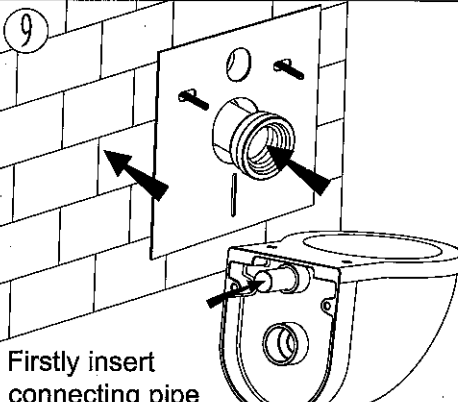
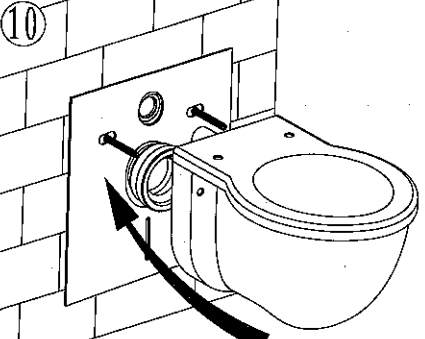
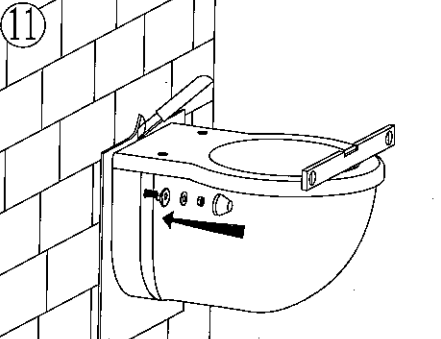
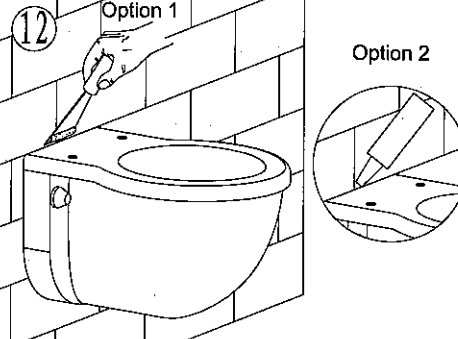


9. Wall thickness range 20~60mm (from frame outside surface to finished wall)

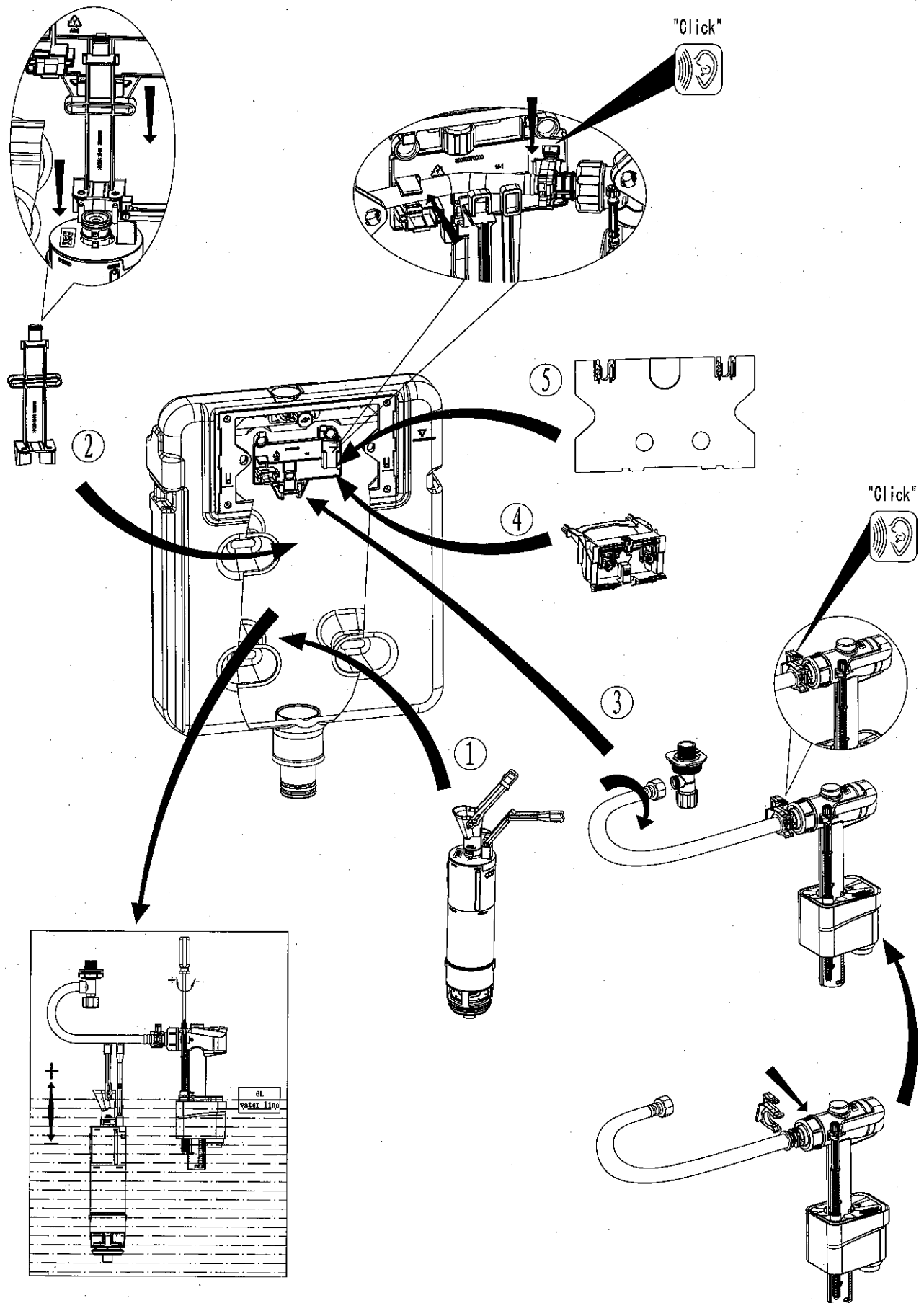


Note: Choose connecting bolts hole with diameter of 180mm or 230mm according to actual dimension of toilet.

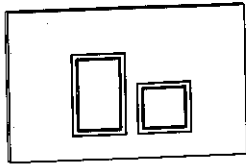
10. Mounting of ceramic bowl

<p>①</p>  <p>Fully insert the straight tube into cistern flushing outlet and connecting pipe into discharging outlet.</p>	<p>②</p>  <p>Draw the lines as above picture.</p>	<p>③</p>  <p>Apply lubricant on rubber washers of straight tube and connecting pipe, then insert into ceramic holes.</p>
<p>④</p>  <p>Draw the lines as above picture.</p>	<p>⑤</p>  <p>As per drawing, L1 is distance between the two lines on straight tube. L2 is distance between the two lines on connecting pipe. Cut the straight tube and connecting pipe as per above drawing.</p>	<p>⑥</p>  <p>Polishing the cutting surface to get chamfer angle as per drawing and deburring.</p>
<p>⑦</p>  <p>Cut the protection sleeve outside of the wall with a knife. Apply lubricant on joint surface of straight tube and connecting pipe.</p>	<p>⑧</p>  <p>Adjust length of connecting bolt to be $d+20\text{mm}$.</p>	<p>⑨</p>  <p>Firstly insert connecting pipe into discharging outlet and straight tube into ceramic hole.</p>
<p>⑩</p>  <p>Mounting the ceramic bowl.</p>	<p>⑪</p>  <p>Screw the bowl and remove the extra pad.</p>	<p>⑫</p>  <p>Fill the gap with white cement or glass cement.</p>

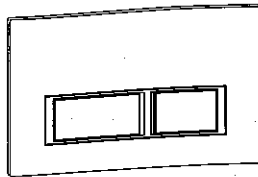
11. Internal flushing mechanism assembly drawing



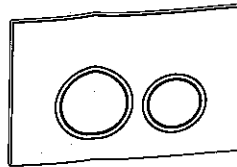
The internal flushing mechanism are already well-assembled and above picture only for reference.



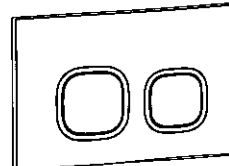
G3004113



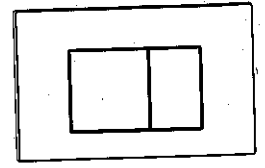
G3004112



G3004111



G3004110



G3004109

